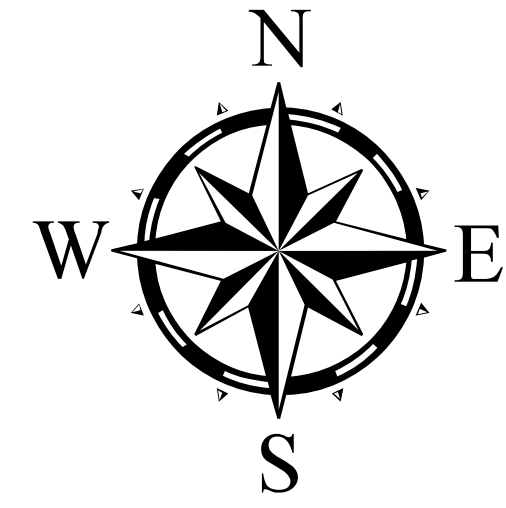
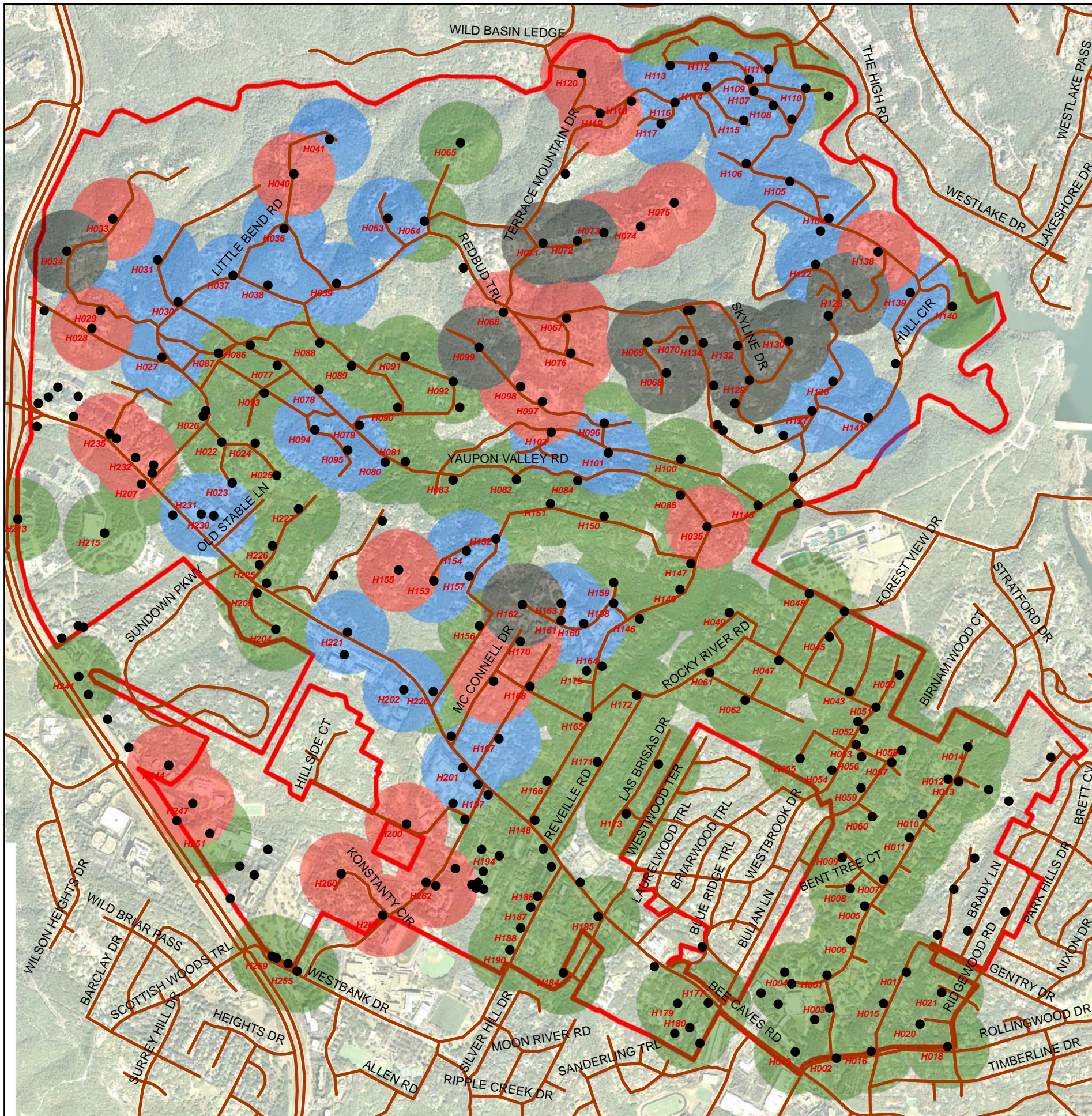


Flow Test Results for Water District 10 Fire Hydrants in West Lake Hills



Fire Hydrant Flows

Each colored circle represents a 500 foot radius from the hydrant location.

Note: some areas are served by multiple hydrants.

- 0 - 999
- 1,000 - 1,499
- 1,500 - 1,999
- 2,000 and greater
- West Lake Hills City Limits